



# Residential Design Studio

ROBERT PHILIP GORDON

## CASE STUDY 4.2

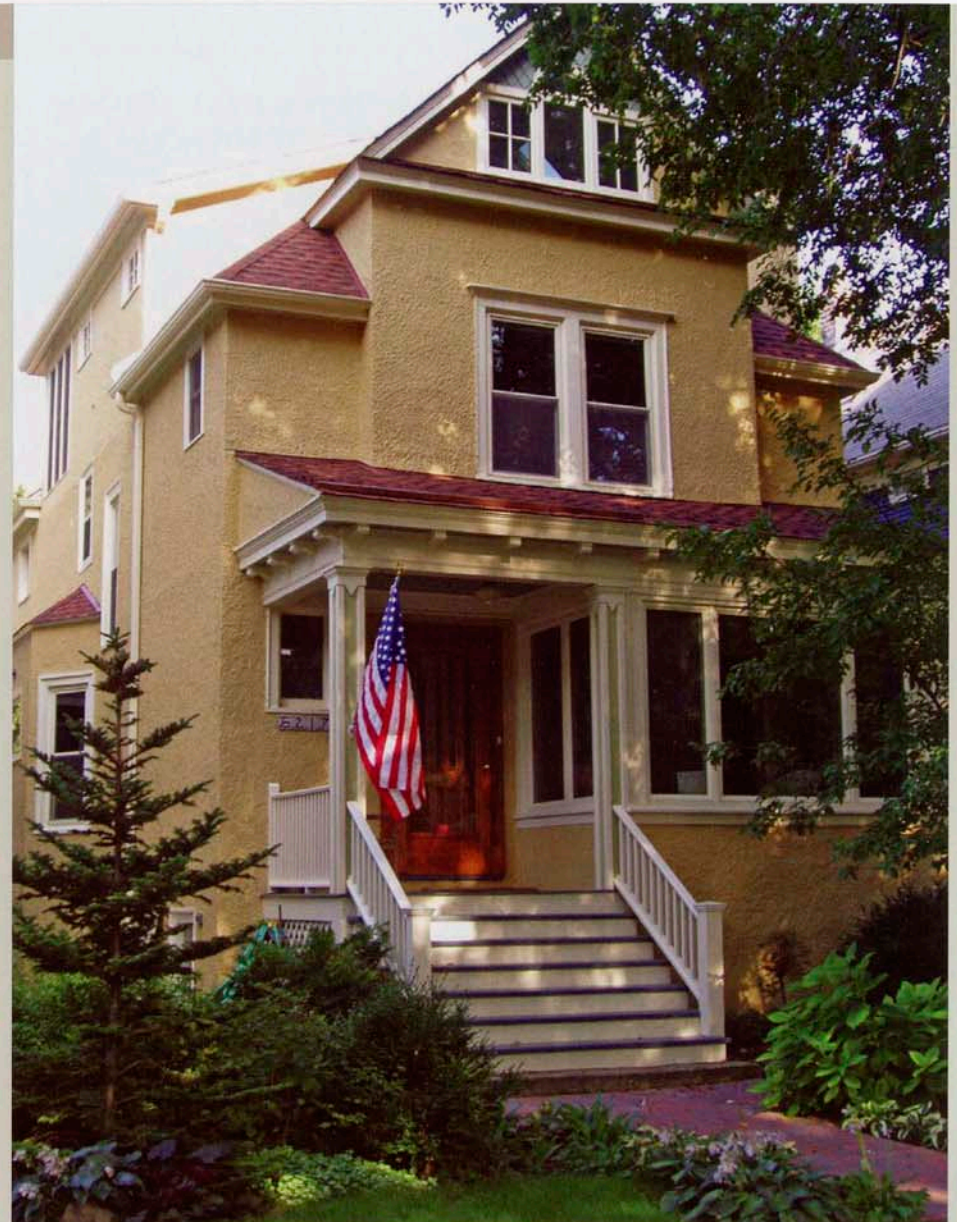
**Brennan/Orelind Residence***Chicago, Illinois**Greene and Proppe Design, Architecture and Interior Design*

The clients' program for renovating this 1908 stucco home located in the Lakewood Balmoral Historic District in Chicago was to create a rear addition to expand the kitchen, relocate the powder room, expand the master suite, and add a new stairway to the third floor. The kitchen was completely remodeled to include an eat-in area and new powder room. The master bedroom was expanded and received a new window seat and a large, luxurious bathroom. The stairway connecting the second and third floors was converted into a light-filled opening leading to the newly remodeled attic office and TV room. The final design has a four-story addition (including basement) totaling about 450 square feet.

The new kitchen has custom-built, craftsman-style, rift-cut red oak cabinets topped with two different granite surfaces, a basket-weave patterned ceramic tile backsplash, and generous storage. A sunny eating area overlooks a small deck that descends into a newly landscaped backyard. The exterior facade received a small



living room

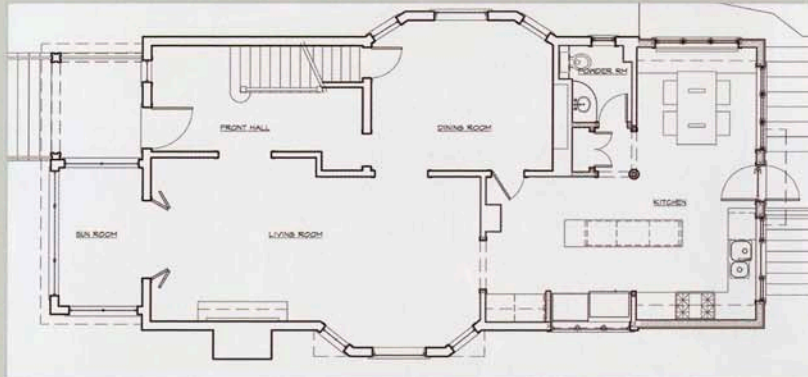


front view

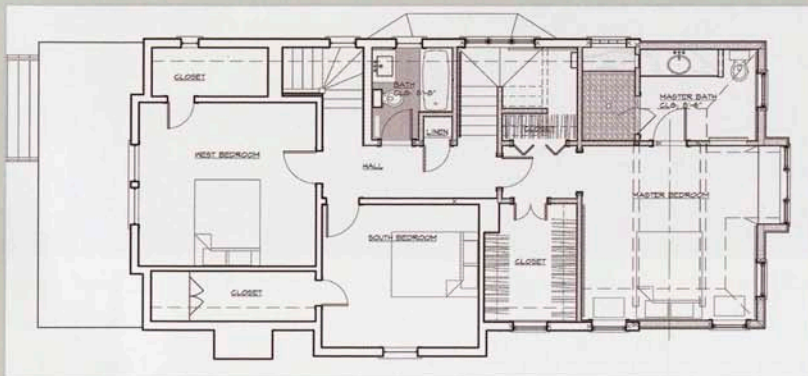
*continued on the next page*

*continued from the previous page*

bump-out and was designed and painted to visually reduce the scale of the home and reflect the style of a Swedish cottage. Adjacent to the kitchen, the powder room carries on the interior theme with an oak vanity table, concrete counter top, vinyl wall covering, and a sublime combination of track and pendant lighting. The new master bedroom has a slightly vaulted bedroom ceiling and a gabled, cantilevered, window seat bump-out. It features a beach-inspired bathroom with a floating maple vanity, blue glass tile floors and wall, heated floor, and a steam shower with a pebble rock floor surface. The entire house was redecorated with new paint colors and wall coverings, many new light fixtures, art glass windows, and custom window treatments.



plan first floor



plan second floor

in the home while it is being renovated. The lot they own is 25 feet wide by 125 feet deep. They have purchased the empty lot next door, which is the same size. They love the outdoors, and the idea of being surrounded by trees is very appealing.

The addition of the garden room makes it possible to change the uses of the former spaces. The former living room can now be used for a library or guest room. The former kitchen and dining area can now be used as a kitchen/family room, for informal dining. Children might eat in the kitchen while an adult dinner party takes place in the garden room. The former living room can now be used as a library after the entry is moved to the side, through the new garden room. It could also become an accessible bedroom without disrupting the flow of the house. The rear patio, located directly off the family room, also extends the useful living space. There is a great view of Mount Rainier visible from the family room.

#### *Exercise*

1. Assume that the original house had a front entry from the street. Draw a street access the front entry with door and a small foyer. Then redesign the entry to open through the garden room, as shown in **Figure 4.4c**. Draw the coat-hanging space in both alternates and show any furniture, lighting, or floor tile that could be considered. Compare these two types of entries.

#### *Bungalow Evolution: Studio Addition*

##### *Client Profile*

Another client, with a similar house in the same neighborhood in Seattle, has seen the work the designer has done (see **Figure 4.4c**). They are impressed with it and engage the designer for a larger project. The client would like to explore the possibility of building a separate studio building to start a small pottery-making business. They have the opportunity to buy two adjoining lots, for an additional property width of 50 feet. There should be space for a work area, exhibition display space, and two offices. The kiln will be located outside of the studio, in an adjoining yard (see **Figure 4.4d**).

## CASE STUDY 4.3

**Shanahan Residence***Chicago, Illinois**Greene and Proppe Design, Architecture and Interior Design*

This project included interior renovation, an addition, and exterior restoration of a 1904 Victorian shingle-style residence in Chicago's Lakewood Balmoral Historic District. The exterior restoration transformed this home from its dilapidated and aluminum-sided state into a home befitting its style and history. Spatially, the original first floor program called for the creation of a better relationship and flow between the kitchen, family room, and backyard. The owners also wanted to add a kitchen eating area, pantry space, improved storage, a desk workspace, and deck area. The second floor called for an improved master suite. The architect completed the design of additions to the kitchen, family room, and second-floor master suite, expanding each floor by 180 square feet. The finished product is another testament to historic restoration with the seamless incorporation of modern comforts, luxury, and personality.

The new kitchen follows in the Arts and Crafts tradition with custom-built, quarter-sawn, oak cabinetry. The dark green granite countertops are complemented by cabinets with hammered leaded glass panels. To complement the dramatic granite countertops, the island base is also painted deep seaweed green. A rift-cut oak top matches the surrounding cabinetry and offers a friendly casual dining surface. The kitchen also features a nine-foot desk, a mudroom area with matching oak woodwork, and a large walk-in pantry. Adjacent to the kitchen, the powder room continues the interior theme. The built-in washstand is crowned with an ebony-stained mosaic tile backslash and elegant vessel sink on a soapstone top. The original toilet and sink locations were switched during the remodeling. The redesigned family room enjoys a greatly improved connection with the new kitchen and boasts oak built-ins that reflect the kitchen's style and warmth. The second-floor master suite was completely remodeled and received a new balcony. The master bathroom features his-and-her vanity areas, a large walk-in shower, a freestanding Victorian soaking tub, and a separate toilet room for added privacy and functionality. The newly restored exterior of the home exemplifies the shingle style with added Arts and Crafts details and colors.



kitchen

*continued on the next page.*

*continued from the previous page*



family room

